

Coupler Mounted Lifting Hook

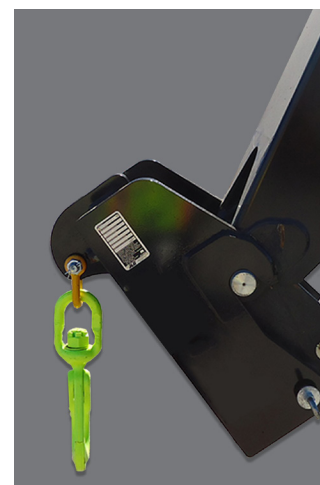
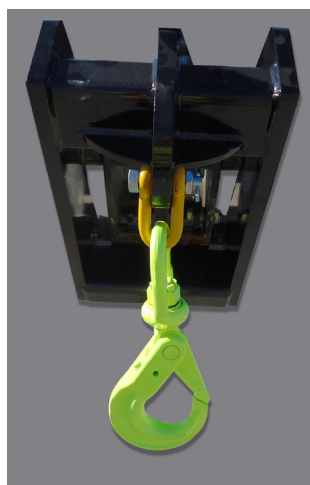
Optimize the use of your JLG telehandler with the new coupler mounted lifting hook. The lifting hook attaches directly to your machine, without the need of a carriage or forks. The lifting hook allows the ability to lift a suspended load without the obstruction of forks extending beyond the attachment.

Features

- Directly mounts onto machine coupler
- Picks up and carries loads as easily as a fork mounted lifting hook
- Increased visibility of load for operator

Specifications

- Maximum capacity: 15,000 lbs
- Maximum weight: 178 lbs
- Distance to center of gravity: 4.4 in



Current Production - Coupler Mounted Lifting Hook

Available Through JLG Aftermarket Or With New Machine Orders

| CAPACITY | | | 5,500 lbs. | 15,000 lbs. | 16,755 lbs. | |
|----------------|---|---|----------------------|-------------|-------------|---|
| APPROX. WEIGHT | | | 133 lbs. | 178 lbs. | 354 lbs. | |
| PART NO. | | | 1001242510 | 1001207606 | 1001192700 | |
| MODEL | SN BREAKS | LOAD CHART BOOKLET | | | | |
| JLG | 642, 943, 1043, 1055, 1255 ONLY | Software, Chart Library | 1001187087 (Ref No.) | | | |
| | 742 | ALL | 1001226012 | • | | |
| | 943/1043 | Without Outriggers | 1001212420 | | • | |
| | | With Outriggers | 1001212419 | | • | |
| | 1055 | Prior To 0160074169 | 1001212227 | | • | |
| | | 0160074169 - Present | 1001211156 | | • | |
| | 1255 | Prior To 0160074168 | 1001212225 | | • | |
| | | 0160074168 - Present | 1001211153 | | • | |
| | 1644 | ALL | 1001233430 | | | • |
| 1732 | ALL | 1001233431 | | | • | |
| G5-18A | with the Universal (skid steer) quick coupler 0160040809 - Present | 1001126677 | • | • | | |
| SKYTRAK T4F | 6036 | 0160069720 - 0160075649, incl 0160065792, 0160065798, 0160065824, 0160069383, 0160069411, 0160075653 & 0160075722 | 1001199500 | | • | |
| | | 0160075650 - Present, excl 0160075653 & 0160075722 | 1001211867 | | • | |
| | 6042 | 0160069720 - 0160075656, incl 0160065792, 0160065798, 0160065824, 0160069383 & 0160069411 | 1001199504 | | • | |
| | | 0160075657 - Present | 1001211869 | | • | |
| | 8042 | 0160069722 - 0160075670, incl 0160065791, 0160065796, 0160065825, 0160065826, 0160069336, 0160069359 & 0160069441 | 1001199508 | | • | |
| | | 0160075671 - Present | 1001211871 | | • | |
| | 10042 | 0160069722 - 0160075987, incl 0160065791, 0160065796, 0160065825, 0160065826, 0160069336, 0160069359 & 0160069441 | 1001199512 | | • | |
| | | 0160075988 - Present | 1001211873 | | • | |
| 10054 | 0160069722 - 0160075682, incl 0160065791, 0160065796, 0160065825, 0160065826, 0160069336, 0160069359, 0160069441 & 0160075696 | 1001199518 | | • | | |
| | 0160075683 - Present, excl 0160075696 | 1001211875 | | • | | |

NOTES:

- Use only JLG approved attachments with proper material handler model/attachment load capacity charts displayed in the operator's cab.
 - Never use your attachment as a work platform or personnel carrier.
- Can't find the attachment you are looking for? Contact your JLG Aftermarket Parts representative at 1-877-JLG-LIFT or visit www.jlg.com.

Non-Current Production - Coupler Mounted Lifting Hook, JLG
Available Through JLG Aftermarket Parts

| CAPACITY | | | 15,000 lbs. | |
|----------------------|-----------|--|-------------|---|
| APPROX. WEIGHT | | | 178 lbs. | |
| PART NO. | | | 1001207606 | |
| MODEL | SN BREAKS | LOAD CHART BOOKLET | | |
| JLG | 642 | ALL | 1001212421 | ▪ |
| | G6-42A | 0160037722-0160040659 | 1001110401 | ▪ |
| | | 0160040678 - Present | 1001130739 | ▪ |
| | G9-43A | 0160037671 - 0160040674, excl 0160040468 & 0160040672 | 1001110402 | ▪ |
| | | 0160040675 - Present, incl 0160040468 & 0160040672 | 1001130708 | ▪ |
| | G10-43A | 0160037671 - 0160040674, excl 0160040468 & 0160040672 | 1001115257 | ▪ |
| | | 0160040675 - Present, incl 0160040468 & 0160040672 | 1001130844 | ▪ |
| | G10-55A | 0160037690 - Present, incl 0160038505, 0160038507, 0160038324, 0160038489 & 0160038493 | 1001115138 | ▪ |
| | G12-55A | 0160037689 - Present | 1001115540 | ▪ |
| | G15-44A | Prior To 0160074142 | 1001194130 | ▪ |
| 0160074142 - Present | | 1001211953 | ▪ | |



NOTES:

- Use only JLG approved attachments with proper material handler model/attachment load capacity charts displayed in the operator's cab.
- Never use your attachment as a work platform or personnel carrier.

Can't find the attachment you are looking for? Contact your JLG Aftermarket Parts representative at 1-877-JLG-LIFT or visit www.jlg.com.